



CLEARPASS

HIGH THROUGHPUT X-RAY INSPECTION SYSTEM

WITH AI ASSISTANT AND EXTRAORDINARY DETECTION CAPABILITY



CLEARPASS Full Body X-ray Scanner from LINEV Systems answers the calls and demands of Corrections, Transportation and Customs and Border Protection professionals for a compact scanning technology with advanced, high-resolution imaging performance and advanced detection capabilities.

The inspected person in CLEARPASS remains stationary and the bodyscanner provides industrie's fastest image acquisition time of 3 seconds. This new revolutionary X-ray inspection system is rugged, fast, and non-contact!

The unique pass-through design and prison-proven LINEV Systems exclusive automatic threat detection algorithms facilitate the rapid, non-intrusive inspection of people attempting to conceal contraband items on or inside their bodies.

KEY FEATURES

Low radiation dose (from 0,25 μ Sv), allowing multiple inspections of one person within a year

Use of A-EYE™ software - artificial intelligence system for automatic detection and classification of objects located inside and on the human body

High quality and information content of the image

High detection capacity

High throughput

Integration into existing infrastructure, integration with access control systems and databases

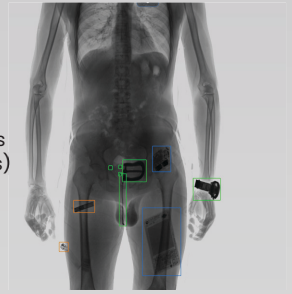
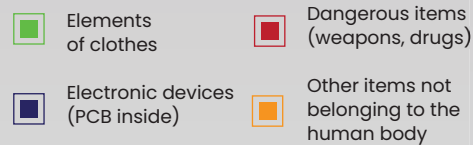
A wide range of image processing algorithms (tools)

Easy storage and transfer of the received information

Modular design for quick installation on site

SMART THREAT DETECTION

Automatic intellectual detection and indication of all threats on and inside the human body



CLEARPASS DMS

CLEARPASS DMS can unite X-ray bodyscanners from distant locations into one network keeping track of the total X-ray exposure dose for each inspected person even when the person undergoes a security screening in different locations.

CLEARPASS DMS synchronizes the information: inspected people's accounts, inspection scan records, and X-ray images between all connected devices.

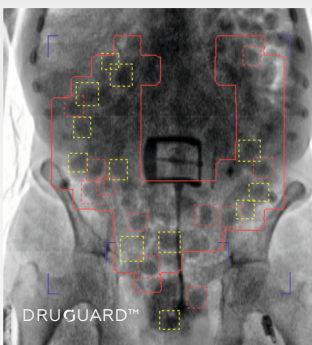
CLEARPASS DMS is a set of applications used to run X-ray people screening systems. The system allows operators to inspect people and view their accounts, perform a security screening, and view the obtained X-ray images.

CLEARPASS DMS includes at least three levels of controlled access with the following:

- An "Operator" level for making scan, creating and filing reports and saving images as require;
- A "Supervisor" level for supervisory staff to update subject information, create / update operators, review images and file data and monitor all operators' activity and data collected;
- An "Administrator" level to create/update/delete user group members with different levels of access, view audit logs, view images, save images to external drives and generate reports;

OPTIONS

- Sanitization
- JMS Integration
- FDA approved thermometer
- DrugGuard
- Networking
- A-EYE



Automatic drugs detection software algorithms for operator assistance & control



Smart HD images for increased penetration and resolution



✉ info@linevsystems.com 🌐 linevsystems.com

© LINEV Systems. All rights reserved. This material is provided for informational purposes only and does not modify or replace the applicable terms and conditions. In the event of any conflict, the terms and conditions shall govern and control. Product design and specifications may change without notice. Refer to the official technical proposal for current and binding specifications. Unauthorized use, reproduction, disclosure, or export is prohibited.



0855-SA13102025

