



BV 100100 DV

X-RAY DUAL VIEW INSPECTION SYSTEM

ESPECIALLY DESIGNED FOR QUICK, ACCURATE AND HANDSFREE INSPECTION OF BAGGAGE AND SMALL CARGO



KEY FEATURES

- Dual-view technology
- The automatic identification of suspicious objects (drugs, explosives)
- Availability of 7-, 3-colour and infinite colour palettes of images
- The fault-tolerant configuration of the acquisition/analysis workstation
- Quick start-up and shutdown

The BV 100100 DV a high-resolution, dual view X-ray baggage inspection system with the ability to automatically detect prohibited objects and threats.

The dual-view system means that the operator can simultaneously view two separate images (in perpendicular orientation), thus giving a more complete view of the object being scanned and reducing the need for repositioning and rescanning. This enables rapid, accurate and comprehensive threat detection.

The tunnel with a width of 1010 mm and a height of 1010 mm is optimal for inspection of baggage, luggage, small cargo and other items. The System may be used at inspection points of critical infrastructure facilities, law enforcement and security agencies, customs, border guards, event centers, sports arenas, and other places where reliable and uninterrupted operation of inspection systems is required.

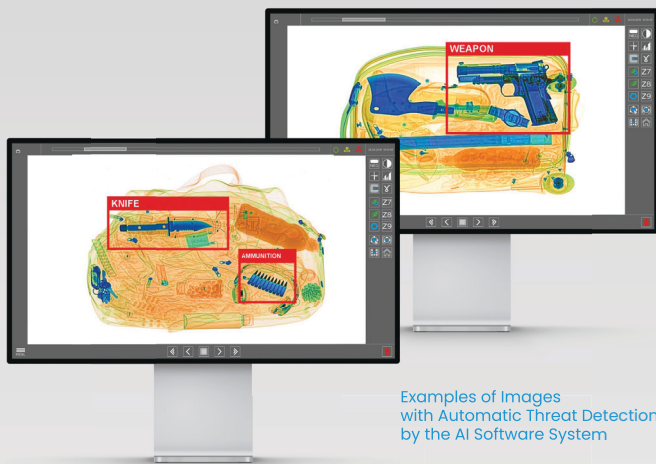
The BV 100100 DV enables the identification of weapons, explosives, drugs and any other dangerous or prohibited items. Unique colour palettes and touch control provide an exceptional level of operator efficiency.

OPTIONS

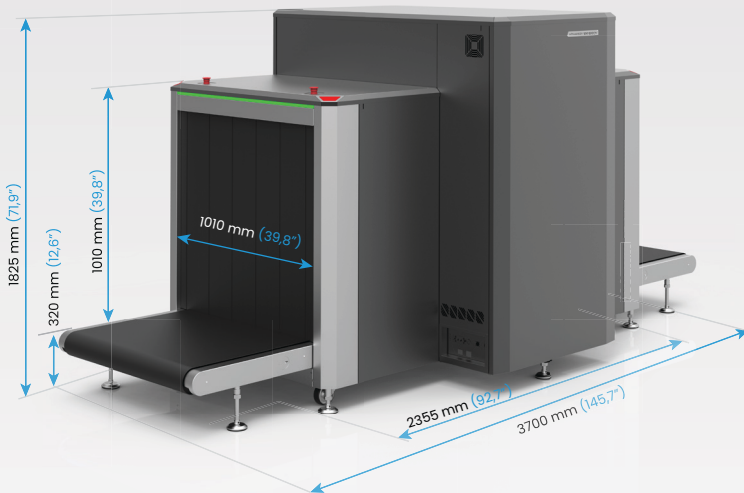
- Touchscreen operation functionality
- Ability to connect to a local network
- Remote operator position (up to 25 m)

ACCESORIES

- Roller tables with a length that is multiples of 0.5 m
- Operator's desk with chair
- Operator's Workstation Stand
- Test objects kit
- Ramp



Examples of Images with Automatic Threat Detection by the AI Software System



GENERAL SPECIFICATIONS

DIMENSIONS

TUNNEL DIMENSIONS

width	1010 mm [39,8 in]
height	1010 mm [39,8 in]

OVERALL DIMENSIONS (MAX)

width	1600 mm [63,0 in]
height	1825 mm [71,9 in]
length	3700 mm [145,7 in]

WEIGHT (MAXIMUM)	1350 kg [2980 lbs]
------------------	--------------------

CONVEYOR BELT

Maximum distributed load on the conveyor belt	200 kg [441 lbs]
---	------------------

Conveyor height	320 mm [12,6 in]
-----------------	------------------

Conveyor speed	0.22±0.03 m/s [43,3 ft/min]
----------------	-----------------------------

X-RAY SOURCE

Anode voltage	160 kV
---------------	--------

Beam direction	Diagonally downward & d/sideward
----------------	----------------------------------

X-RAY DETECTOR

Detective ability for copper wire	0,1 mm (38 AWG)
-----------------------------------	-----------------

Penetration on steel	34 mm guaranteed 36 mm typical
----------------------	--------------------------------

Spatial resolution, line pairs per mm	1,5 in the direction of scanning	1,0 along the detector
---------------------------------------	----------------------------------	------------------------

POWER SUPPLY

Line voltage	230 VAC ± 10%/120 VAC ± 5%
--------------	----------------------------

Line frequency	50/60 Hz
----------------	----------

Power consumption	Max 1,4 kVA
-------------------	-------------

ENVIRONMENTAL REQUIREMENTS

Operation:

Ambient temperature	0 °C to +40 °C
---------------------	----------------

Maximum relative humidity	Up to 90%, non-condensing
---------------------------	---------------------------



info@linevsystems.com linevsystems.com

© LINEV Systems. All rights reserved. This document is marketing material for informational use only. Product design and specifications may change without notice. Refer to the official technical proposal for current and binding specifications. Unauthorized use, reproduction, disclosure, or export is prohibited.



9001:2015

0902-SA26022026

