



## BV 7080 DV

# OPTIMAL DUAL VIEW SOLUTION

FOR QUICK AND ACCURATE INSPECTION OF PARCELS, SMALL AND MID-SIZE BAGGAGE



The BV 7080DV a high-resolution, dual view X-ray baggage inspection system with the ability to automatically detect prohibited objects and threats.

The dual-view system means that the operator can simultaneously view two separate images (in perpendicular orientation), thus giving a more complete view of the object being scanned and reducing the need for repositioning and rescanning. This enables rapid, accurate and comprehensive threat detection.

## KEY FEATURES

- Dual-view technology
- The automatic identification of suspicious objects (drugs, explosives)
- Availability of 7, 3 colour and infinite colour palettes of images
- The fault-tolerant configuration of the acquisition/analysis workstation
- Quick start-up and shutdown

The tunnel with a width of 690 mm and a height of 800 mm is optimal for inspection of baggage, bags, hand luggage and parcels. The System may be used at inspection points of critical infrastructure facilities, law enforcement and security agencies, customs, border guards, hotels, event centers, educational institutions, sports arenas, and other places where reliable and uninterrupted operation of inspection systems is required.

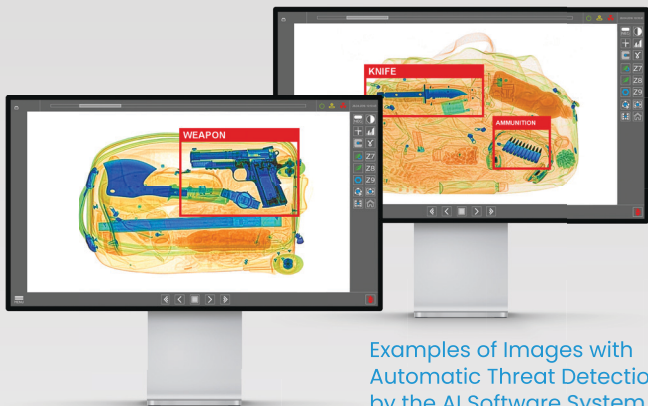
The BV 7080DV enables the identification of weapons, explosives, drugs and any other dangerous or prohibited items. Unique colour palettes and touch control provide an exceptional level of operator efficiency.

## OPTIONS

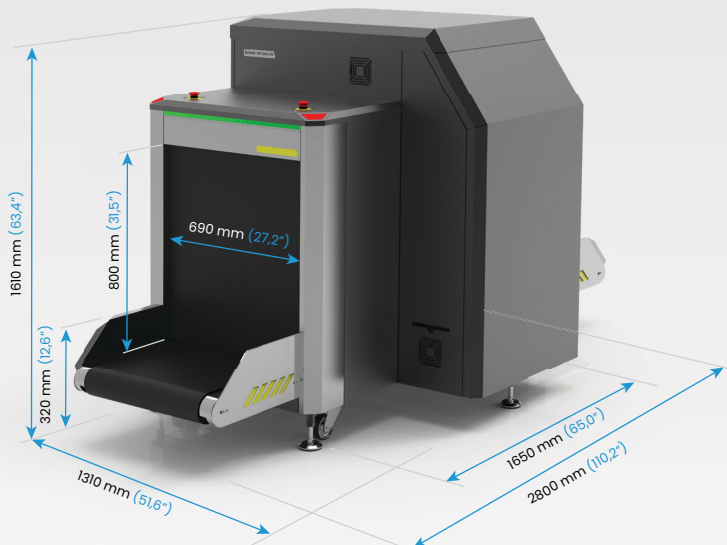
- Touchscreen operation functionality
- Ability to connect to a local network
- Remote operator position (up to 25 m)
- Rigid type packaging

## ACCESORIES

- Roller tables with a length that is multiples of 0.5 m.
- Operator's desk with chair
- Operator's Workstation Stand
- Test objects kit
- Screwed-down feet (4 pcs.)
- Ramp



Examples of Images with Automatic Threat Detection by the AI Software System



## GENERAL SPECIFICATIONS

### DIMENSIONS

#### TUNNEL DIMENSIONS

width	690 mm [27,2 in]
height	800 mm [31,5 in]

#### OVERALL DIMENSIONS (MAX)

width	1310 mm [51,6 in]
height	1610 mm [63,4 in]
length	2800 mm [110,2 in]

#### WEIGHT (MAXIMUM)

895 kg [1973 lbs]

### CONVEYOR BELT

Maximum distributed load on the conveyor belt 200 kg [441 lbs]

Conveyor height 320 mm [12,6 in]

Conveyor speed 0.22±0.03 m/s [43,3 ft/min]

### X-RAY SOURCE

Anode voltage 160 kV

Beam direction Diagonally upward & d/sideward

### X-RAY DETECTOR

Detective ability for copper wire 0,1 mm (38 AWG)

Penetration on steel 34 mm guaranteed 36 mm typical

Spatial resolution, line pairs per mm 1,5 in the direction of scanning 1,0 along the detector

### POWER SUPPLY

Line voltage 230 VAC ± 10%/120 VAC ± 5%

Line frequency 50/60 Hz

Power consumption Max 1.4 kVA

### ENVIRONMENTAL REQUIREMENTS

Operation:

Ambient temperature 0 °C to +40 °C

Maximum relative humidity Up to 90%, non-condensing



info@linevsystems.com linevsystems.com

© LINEV Systems. All rights reserved.  
This document is marketing material for informational use only. Product design and specifications may change without notice. Refer to the official technical proposal for current and binding specifications. Unauthorized use, reproduction, disclosure, or export is prohibited.



0925-SA03042026

